

Ripon

Five bedroom house

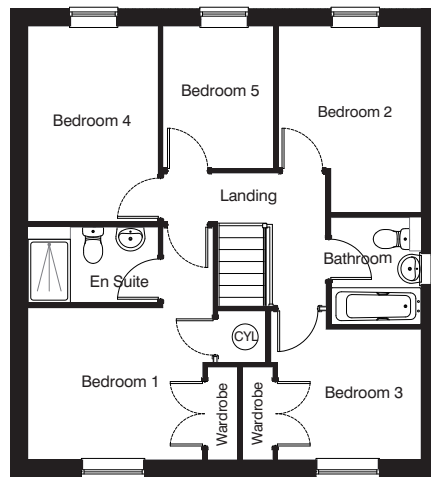
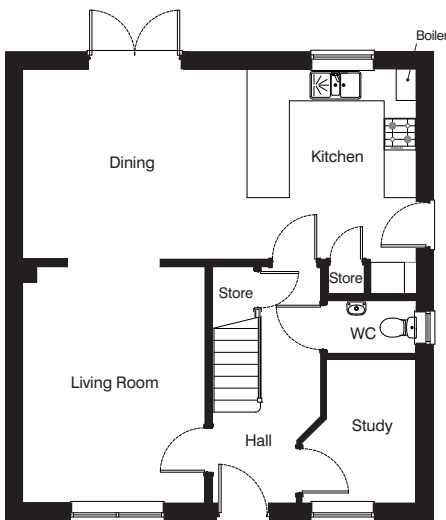


Solar panels

Please ask a sales advisor to confirm if solar panels are fitted to the property on the plot number you are interested in.



All house type images are for illustrative purposes only and the final building detailing and finishes may vary slightly from what is shown. Please see our sales advisors for full site specific details.



Ground floor

Living Room	3.44m x 4.46m	11'3" x 14'8"
Kitchen/Dining Room	7.44m x 3.59m	24'5" x 11'9"
Study	2.15m x 2.72m	7'1" x 8'11"

First floor

Bedroom 1 (excluding wardrobe & door recess)	3.29m x 2.86m	10'10" x 9'5"
En Suite	2.45m x 1.41m	8'0" x 4'8"
Bedroom 2	2.69m x 3.52m	8'10" x 11'7"
Bedroom 3 (excluding wardrobe & door recess)	2.70m x 2.45m	8'10" x 8'0"
Bedroom 4	2.45m x 3.70m	8'0" x 12'2"
Bedroom 5	2.07m x 2.68m	6'9" x 8'10"
Bathroom	1.70m x 2.00m	5'7" x 6'7"

All measurements shown are approximate maximum room dimensions.

Depending on plot number, the floor plans for this house type may be opposite to those shown above.

**CONSUMER
CODE
FOR
HOME BUILDERS**

www.consumercode.co.uk

Plot numbers

Please refer to the development brochure for confirmation of the plot numbers for this particular house type.

Every care has been taken to ensure the accuracy of these particulars but the contents shall not form part of any contract and the vendors reserve the right to alter specification and/or design without notice. Landscaping shown is for illustration purposes only.

LarkfleetHomes

www.larkfleethomes.co.uk